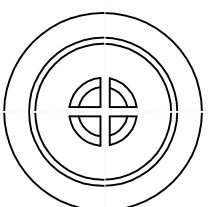
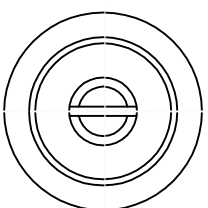
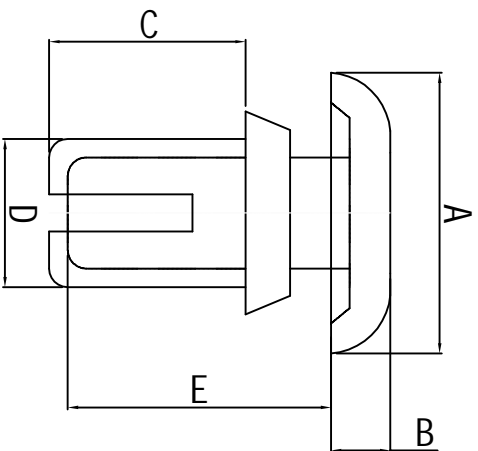


料号 Part NO.	品名 Parts Name	Hole Dia 孔径	Panel Thick 机板厚度	A	B	C	D	E	拉拔力
34-R2024	尼龙铆钉 R2024	2.1	0.6-1.2	4.2	1.2	2.4	2.0	3.8	3KG



- ◆ MATERIAL: NYLON 66 (UL)
 - ◆ FLAME CLASS: 94V-2
 - ◆ COLOR: NATURAL/BLACK
- 公差要求: 未标注公差±0.5

DIMENSION	TOLERANCES	REVISION RECORD				DWG. BY	CHK. BY	DATE	DWG. NO.	UNIT
		A	NEW PART	REVISION RECORD	DWG. BY	CHK. BY	DATE	DWG. NO.	UNIT	
0.0	±0.5								mm	
0.00										
FIRST ANGLE PROJ										



未经授权不得修改和复印
该知识产权属于技术质量部;